



Flood of losses

A building moratorium in the Natomas Basin could have a considerable impact on the region's economy, according to the Sacramento Regional Research Institute. Shutting down development between 2009 and 2011, even taking soft market conditions into account, could create a loss of around 8,300 jobs and \$1.1 billion in output from the direct and indirect sources of construction activity.



pick of the month | BY BRIAN BENNETT |

Kelly Fleming 2005 Cabernet Sauvignon, \$85: Kelly Fleming's vineyard on Pickett Road in Calistoga consistently delivers finished wines that ride a fine line between ripeness and extraction as well as freshness, restraint and balance. This wine shows dark cherry and spiced plum aromas with a lovely high-toned almond and cinnamon note. On the palate, the wine is rich, soft and lush yet retains fresh-fruit acidity and a sense of balance. The tannins add body, yet they blend beautifully with a juicy raspberry and plum sweetness at the finish.

Where to find it: Paul Martin's American Bistro (paulmartinsamericanbistro.com), Crush 29 (crush29.com) in Roseville, David Berkley Fine Wines & Foods (dberkley.com) in Sacramento's Pavilions shopping center and online at kellyflemingwine.com.

Brian Bennett is a founding partner of Paul Martin's American Bistro in Roseville.

What to eat with this wine: A 14-ounce marinated center cut pork chop grilled over white-hot mesquite coals and served atop sautéed brussels sprouts and bacon.

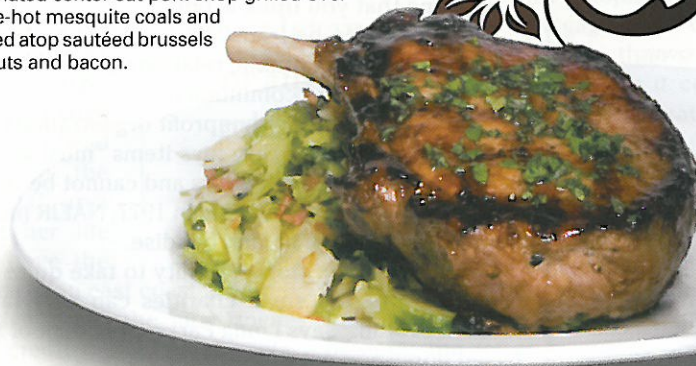


PHOTO: JILL WAGNER